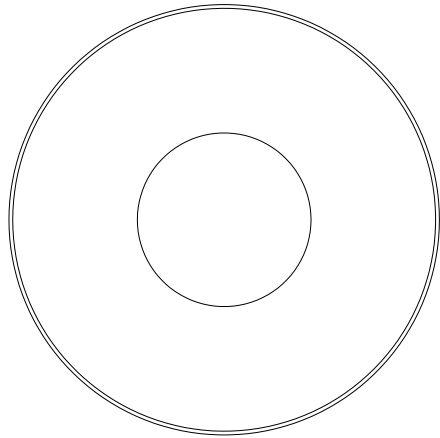


**BUSTER+PUNCH**  
LONDON

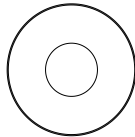
**ESCUTCHEON PLATE**

SWISS PROFILE

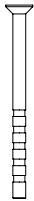
**INSTALLATION MANUAL**  
MANUEL D'UTILISATION  
MANUAL DE INSTRUCCIONE



**CONTENTS**



**x2**  
SWISS ESCUTCHEON  
PLATES



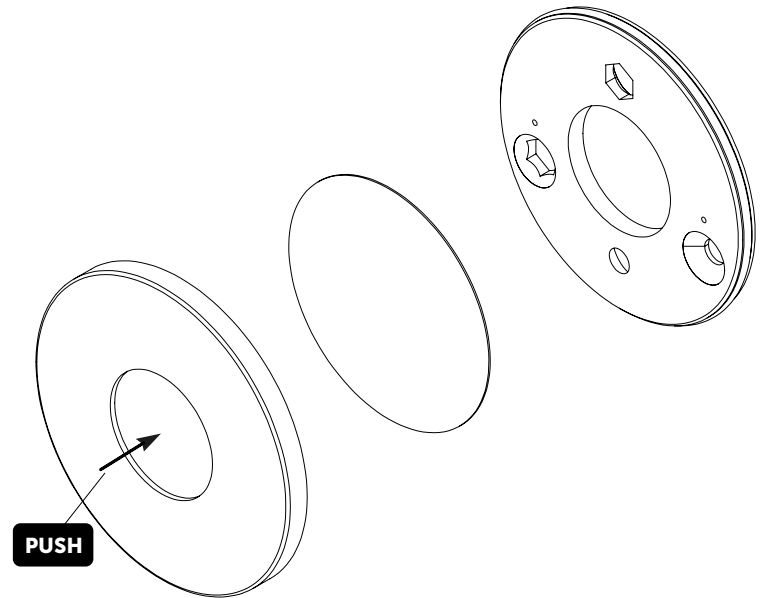
**x2**  
M4 X 60MM SNAP OFF BOLTS  
(CAN BE SHORTENED TO SUIT)



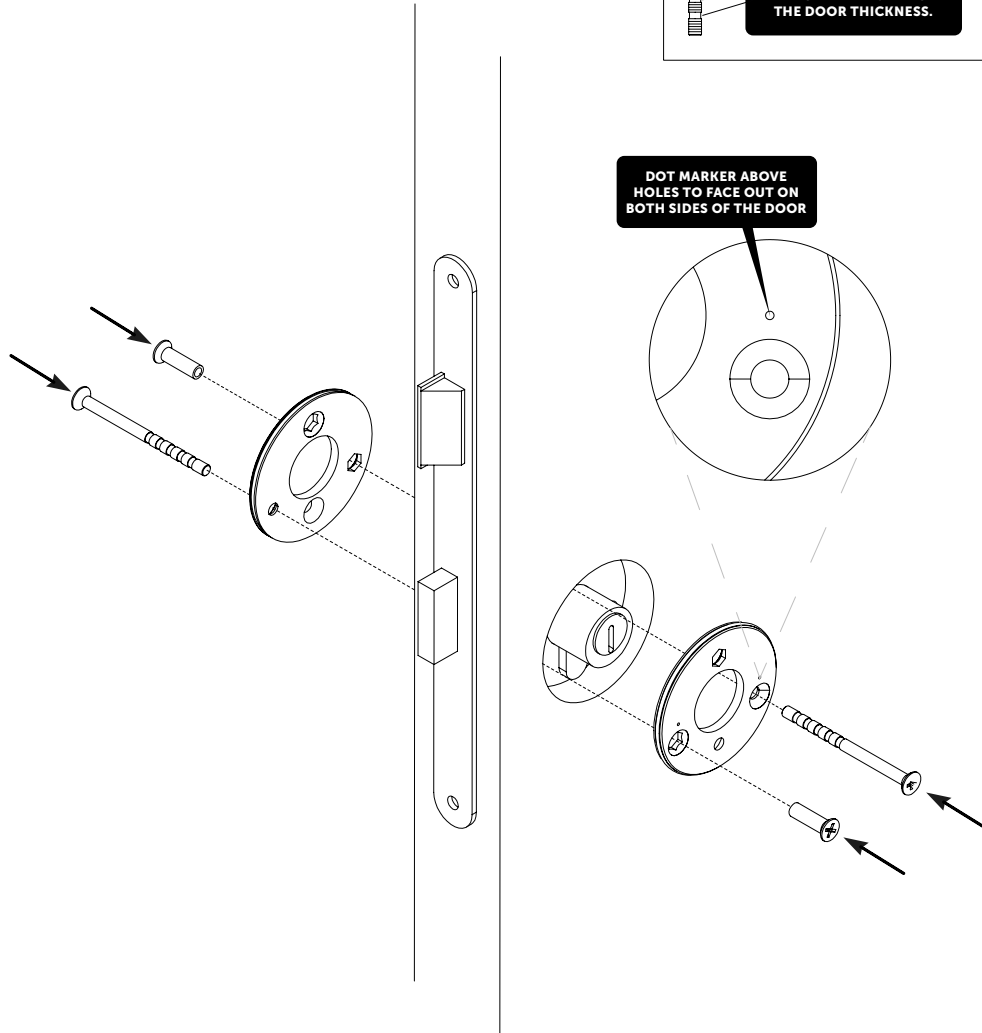
**x2**  
M4 X 17MM BOLT  
BOSSES

**BUSTERANDPUNCH.COM**  
L0244

**1** PUSH THE BLACK CARD TO REMOVE THE COVER PLATES FROM THE ESCUTCHEONS.



**2** INSTALL ESCUTCHEON PLATES ONTO DOOR.



- Align the holes in the escutcheons with the holes in the latch.
- Use the holes with the dot marker above, put bolts through the escutcheons and latch and screw into bolt bosses.

**3** PUT THE COVER PLATES ONTO THE ESCUTCHEONS ENSURING THEY ARE FLUSH WITH THE DOOR.

